

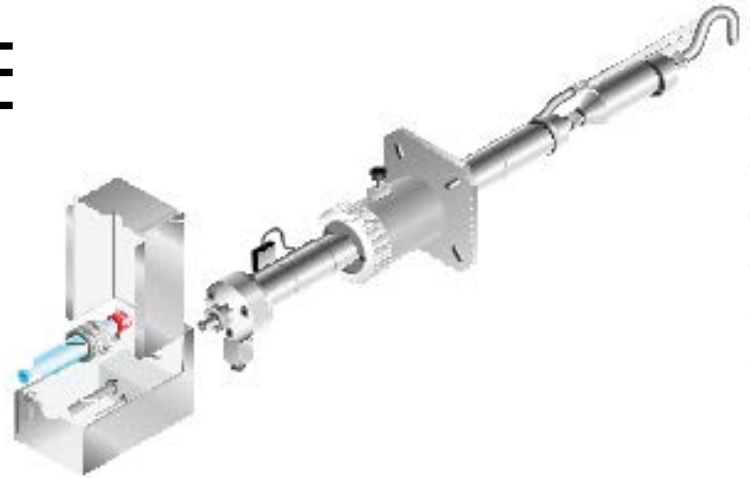


HEATED PROBE

Isokinetic Heated Probes

MAIN FEATURES

- ⊗ Probe body in AISI 316;
- ⊗ Internal suction tube easy to change;
- ⊗ Total isolation of heating element and thermocouple from stack gases;
- ⊗ Special property to connect isokinetic kit, filterholder and nozzles, in or out stack;
- ⊗ Possibility of mounting orifice meter for wet gas flow rate sampling;
- ⊗ Clamps for Pitot tube with thermocouple;
- ⊗ Auxiliary outputs for extended measurements.



The moisture content in the sampled gases obliges to heat both the probe and the collection devices.

The material of the internal body of the probe ensures the necessary rigidity as well as a certain resistance to temperature and corrosion caused by aggressive gases.

The materials used for the collection must be compatible with gas composition, to ensure the integrity of the compounds to determine.

To meet these requirements, **TCR Tecora** studied and developed a standard isokinetic probe to be assembled according to the applications.

HEATED PROBE BODY

Length (useful « L » mm)	P/N *
500	AC99-090-0000SP
1000	AC99-090-0001SP
1500	AC99-090-0002SP
2000	AC99-090-0003SP
2500	AC99-090-0004SP
3000	AC99-090-0005SP

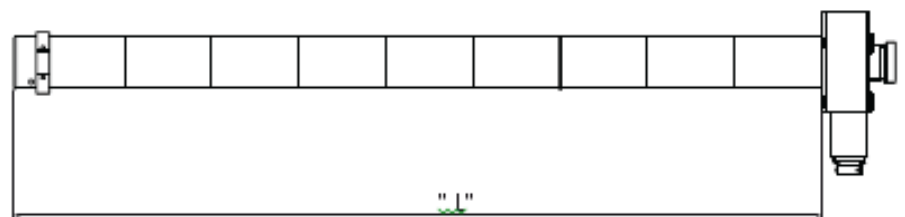
The main body of the probe has a circular section with a diameter of 42mm, available in some standard lengths.

Inside the body, there's an electrically heated tube, which wire is not in contact with stack gases.

An expansion cylinder absorbs dilation differences, allowing to realize probes up to 5m length with no deformation.

⊗ Max. operation temperature: 400°C

⊗ Max. heating temperature: 160C





HEATED BOX FOR FILTERHOLDER

To use the technique of outstack filterholder, it is necessary to heat also the filterholder, in order to prevent water vapour and some volatile organic compounds condensation.

For this purpose it is available an inox heated box already prepared for a quick connection to the heated probe.

In the heated box can be placed several filterholders for measure a wide range of particulate concentration.

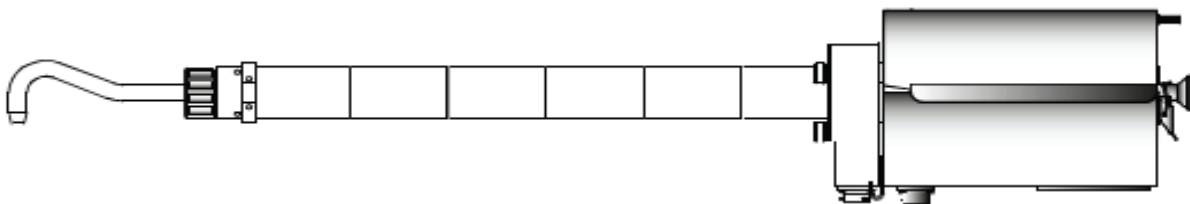
The maximum heating temperature for heated box is:

- ⊙ 160°C (220 VAC – 200W)
- ⊙ 180°C (110 VAC – 400W)

The sufficient isolation allows to maintain the outside temperature at not dangerous values for the user.

A Tecora unified connector is used for temperature control.

The heated box is supplied with fixing device of glass curve-nozzle.



Heated Box: ⚡ **220VAC – P/N AC99-092-0000SP**

⚡ **110VAC – P/N AC99-092-0001SP**

